

Category	Product Specification				
Rated Voltage	AA Type Alkaline 1.5V Battery (LR6) 8pcs (12V)				
Emergency Power	9V Battery (6LF22) 1pcs (Purchased Separately)				
Operation Type	Electronic Control System (Face Recognition, Password, Card)				
Weight	2.95kg (Exterior and Interior Parts Included)				
Product Size	Interior	84mm(W) X 363.5mm(H) X 69mm(D)			
	Exterior	85mm(W) X 367mm(H) X 73mm(D)			
Category	RF	RF Type	RF Type	RF Type	Operation Type
RFID	13.56MHz Range	A1D	ASK	Single Type	
Safety System Type	447,275MHz	F1D	FSK	Single Type	
Certificate of Free Safety Check Number	B223H006-6003				
Type and Symbol	F-T-K-M				
Certification Number	R-R-iRY-IFP-7070				
Model	IFP-7070				
Developer · Seller	IRISYS				
Manufacturer	Hione Plus	Country of Origin	Made in Korea		
Date of Manufacture					

# Intelligent Door-lock System with Face Recognition Technology

## Face Recognition Door-lock User Manual

For the product with the emergency key applied, the emergency key must be carried in a wallet, handbag etc., or stored in a safe place outside of home (Car etc.,) to be used safely.

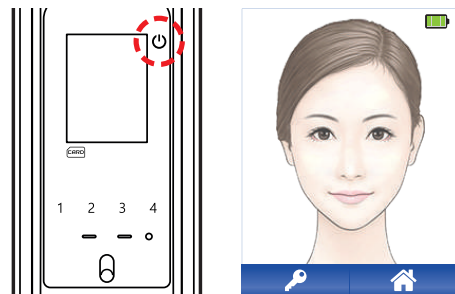


- Face Recognition**  
With the face recognition function, door-lock can be used safely and conveniently.
- IoT Service (Optional)**  
Door can be unlocked through the IoT service from inside.
- Password, Card (NFC Function) Included**  
Password and card can be conveniently used and are freely set and changed.
- Fire Sensor Function**  
In case of fire, detection of temperature above 65°C will activate the door to open for easy escape.
- Up to 100 Passwords Registration Function**  
100 users can use each different passwords.
- Automatic Locking Time Setting Function**  
After the door closes, the automatic locking time can be freely set.

**“The instruction of emergency manual opening and closing of the device must be well-acquainted with.”**  
**“This product is key type/non-key type door-lock and parts of the door-lock can be broken to open incase of malfunctions.”**

## 1. How to open door

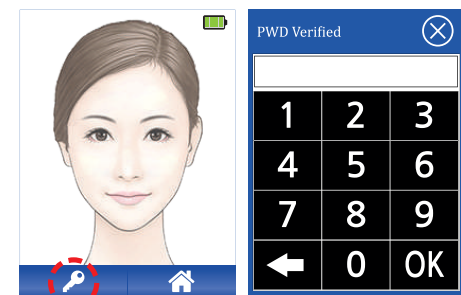
### 1) Door Opening (Face Registration)



1. Press power button.
2. Place your face to fit into the screen for face authentication.

**Caution** If a part of the face is covered with a hat, glasses, sunglasses, or eyeglasses, the authentication may fail.

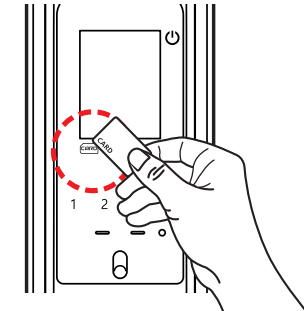
### 2) Door Opening (Password)



1. Press the power button.
2. After pressing the "key icon," press the touch screen to insert the registered password.
3. Press the OK button to open the door.

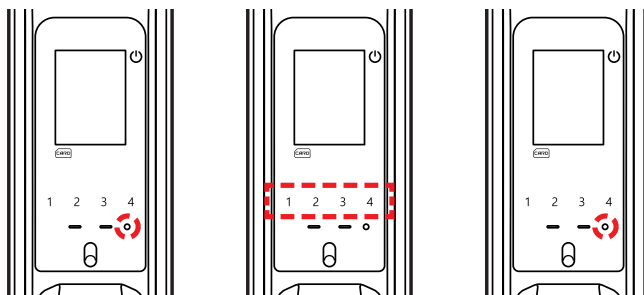
When the wrong password is input in three consecutive times, the external button control will be stopped for 30 seconds and the alarm will go off.

### 3) Door Opening (Card Key)



1. Make the card key contact the card sensing area for authentication.

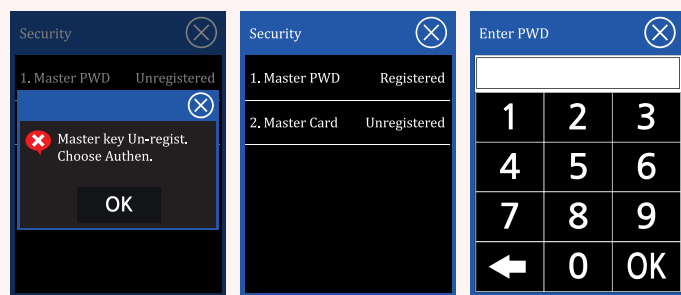
### 4) Door Opening (Emergency Key)



1. Activate the keypad by pressing start button.
2. Press the set password, then press start button to open the door.

## 2. Required Settings (Re-setting after Factory Default)

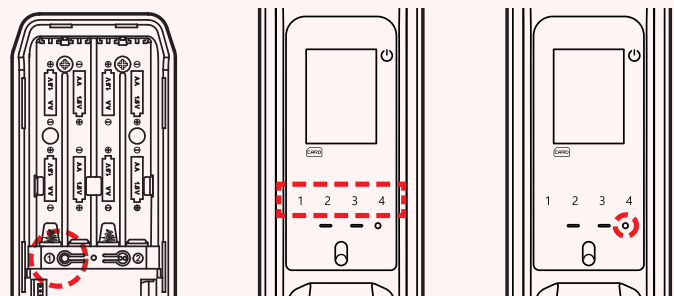
### 1) Administrator Mode



**※ During the initial operation after the installation of the door-lock, register at least one security setting.**

1. Master PWD: Choose password and register 6 to 8 digits numbers.
2. Master Card: Choose master card and contact the card sensor with the card to register.

### 2) Emergency Password Setting



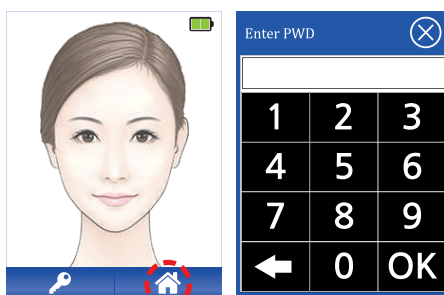
**※ Emergency Password Setting (Default: 1234, Must be re-set after the installation)**

1. With the door open, open the interior battery cover and press ① button at the left bottom.
2. Press the wanted number (Available to register 6~12 digits) at the front keypad.
3. Pressing emergency key button will make the sound and setting is completed.
4. Please proceed to setting 1,2,3 above once more.

**※ Please register the emergency password setting twice to complete the change.**

## 3. How to Use

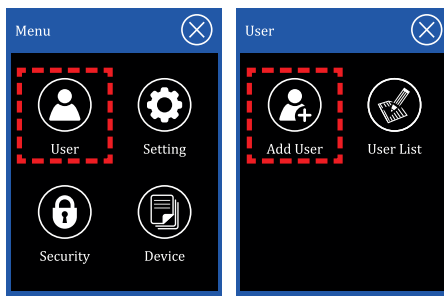
### 1) Administrator Mode



**※ Master password is the compulsory setting that must be registered in the initial operation and it can be set/changed in 'Menu > Setting'.**

1. Press the home icon button after turning on the power.
2. During the initial operation, input the master password or use the master card registered.

### 2) User Registration

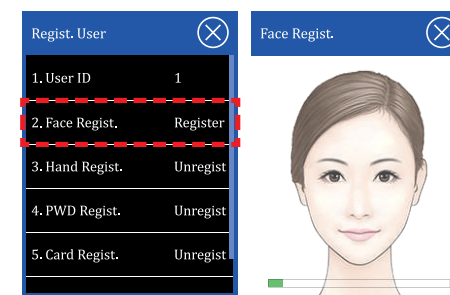


1. Press 'Menu' > 'User' button.
2. Press 'Add User' button.

**※ When registering a user for the first time or changing the user information, please do so with the door open having the emergency key and card handy to prevent lock out by mistake.**

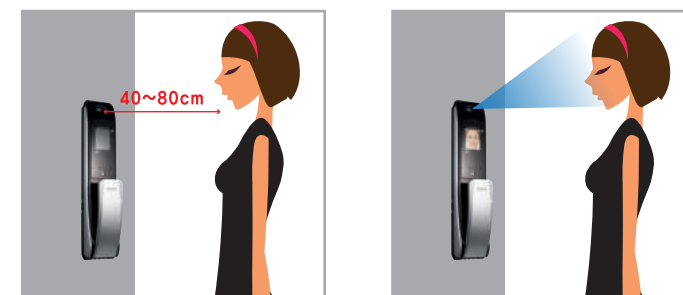
After registering the user, check if the door opens with the registered method.

### 2-1) Face Registration

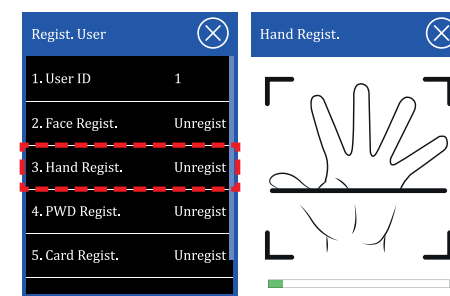


1. Press 'User' > 'Add User' > 'Face Regist.' button.
2. Move your face to fit all areas of the face into the screen and wait until the loading of the green bar at the bottom is completed.

**Caution** 1. Please keep the distance between the face and door-lock to be 40~80cm  
 2. Please do not wear hats, glasses, sunglasses, eye patch and etc.,  
 3. Be cautious to make sure only one person appears on the screen when registering.  
 4. Be cautious to keep the eyes at the front and not to change the facial expression such as by blinking or smiling.



### 2-2) Hand Registration

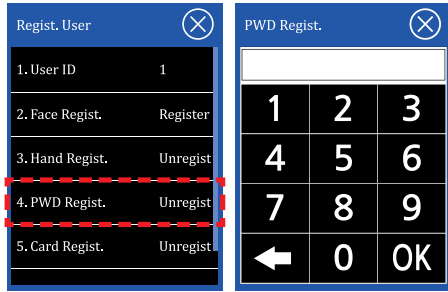


1. Press 'User' > 'Add User' > 'Hand Regist.' button.
2. After placing the hand to fit into the screen, wait until the loading of the green bar is completed.

**※ When registering a hand, open your palm so that the fingers are distanced away from each other as shown in the figure.**

### 3. How to Use

#### 2-3) Password Registration

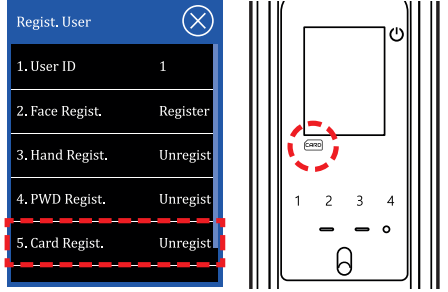


1. Press 'User' > 'Add User' > 'PWD Regist.' button.
2. After pressing the same password twice, press 'OK' button to register.

**Caution**

1. Please assign password to be 6 to 8 digits numbers.
2. The same passwords for the administrator and users are not registered.
3. The passwords are not changeable after the registration.
4. The user must register the password in firsthand in case of the initial installation.
5. Please be noted that the incidents occurring due to the registration of the password by someone other than the user will not be held responsible by the manufacturer.

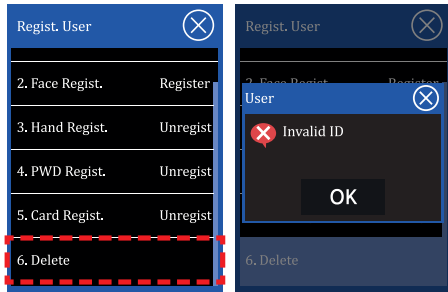
#### 2-4) Card Registration



1. Press 'User' > 'Add User' > 'Card Regist' button.
2. Make the card contact the card sensing area.

※ NFC function is only available for users with Android mobile device with NFC function and NFC USIM Chip..

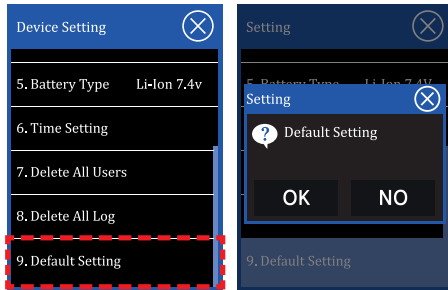
#### 3) User Information Deletion



1. Press 'User' > 'Add User' > 'Delete' button.
2. Press 'OK' button to delete the user information.

※ After the registration of the user, only the administrator will be allowed to delete user information.

#### 5-4) Default Setting

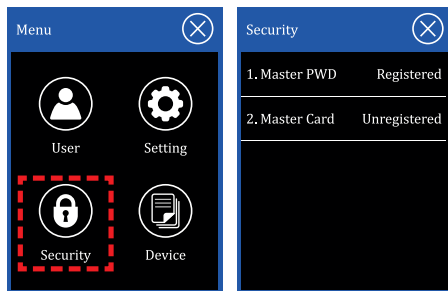


1. Setting > Press the "Default Setting" button.
2. The device is returned back to the factory default setting.

**Caution**

1. When factory default is implemented, the administrator's authority is deleted.
2. All user information (face, hand, password, card) is deleted, Settings back to default.

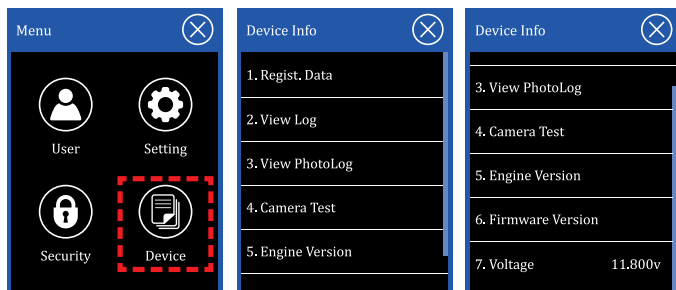
#### 6) Security



1. Menu > Press the "Security" button.
2. The options to access the menu can be set. Sets either the master card or password.

※ Security setting is used when the menu is entered.

#### 7) Device



1. Press the 'Menu' > 'Device' button.
2. The version information of the device and recorded history can be searched.

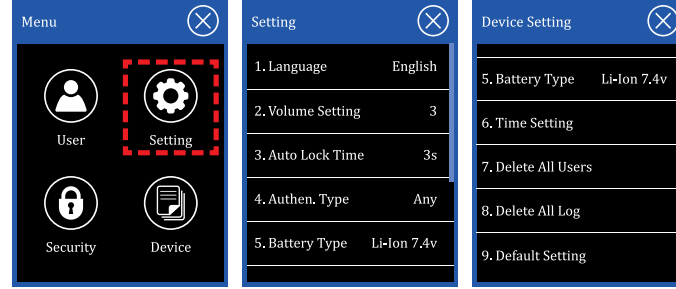
#### 4) User List



1. Press 'Home Icon' button > Press 'User' button.
2. Press 'User List' button.
3. Press the ID of interest to check the information.

※ User List > Edit menu can be used only to add or register the un-registered security option and delete the user information, Editing of previously registered information is not possible.

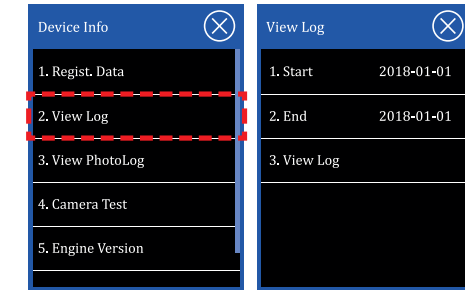
#### 5) Setting



※ Press the 'Home Button' > 'Setting' Button.

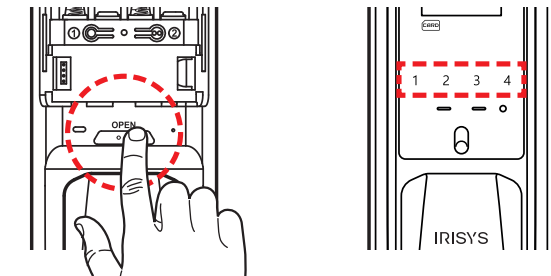
1. Language : Chooses the language to be used in the device.
2. Volume Setting : Sets the Volume of the device. After pressing the 'OK' button, the volume is reflected. (Initial Set-up: level 3)
3. Auto Lock Time : Sets the time of door being open in unit of seconds. (Initial set-up: 3 seconds)
4. Authen\_Type : Sets the authentication type. (Refer to 5-1)
5. Battery Type : Sets the battery type of the device. (Standard: Li-Ion 7.4v) \*Do not change the setting.
6. Time Setting : Sets the present time/date which will be displayed in the device.
7. Delete all users : Deletes all users' registered information. (Refer to 5-2)
8. Delete All Log : Deletes all log history of the device. (Refer to 5-3)
9. Default Setting : All settings are returned back to factory default settings. (Refer to 5-4)

#### 8) View Log



1. Press the 'Menu' > 'Device' > 'View Log' button.
2. Search period can be chosen to search the record during the specific period.

#### 9) Using the Keypad



※ With the door open, press 'Open/Close' button for 3 seconds, then press the number applicable.

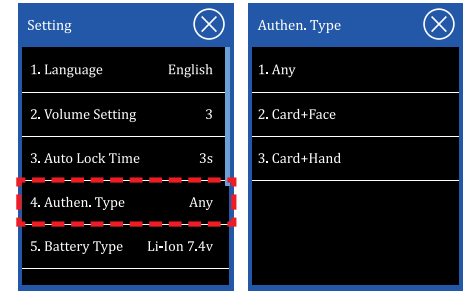
Number 1: Automatic/Manual Locking (Default: Automatic Locking)  
 ▶ Automatic Locking Setting - Three syllable sound signals the setting of the function.  
 Manual Locking Setting - Two syllable sounds signals the setting of the function.

Number 2: Scrambling Password/Actual Password (Default: Actual Password Input Mode)  
 ▶ Scrambling Password Setting - Three syllable sound signals the setting of the function.  
 Actual Password Setting - Two syllable sound signals the setting of the function.

Number 4: Automatic Locking Time Setting (Default: 2 seconds)  
 ▶ Press number 4 for 1 second and press any number from 1, 2, 3, 4  
 (1: 2 seconds, 2: 4 seconds, 3: 6 seconds, 4: 8 seconds)  
 Ex) 4 seconds setting: Press open button for 3 seconds + Button 4 + Button 2

※ This device is a domestic electromagnetic wave adaptor that is recommended to be used in households.  
 ※ The contents of this user manual can be edited without prior consent for the improvement of product functions. (Additional model is indicated with stickers)

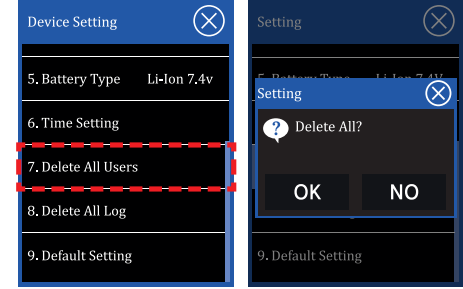
#### 5-1) Setting\_Authentication Type



1. Press the 'Setting' > "Authen. Type" button.
2. Sets the door opening type.

\*Any : Any of the registered method for authentication can be used.  
 \*Card+Face : Card and face both must be presented for authentication.  
 \*Card+Hand : Card and hand both must be presented for authentication.

#### 5-2) Delete All Users



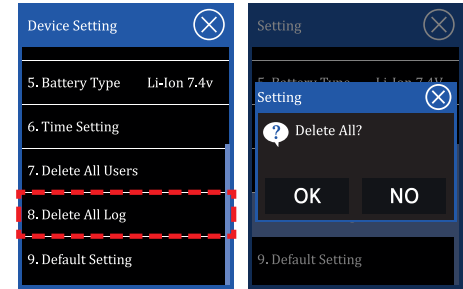
1. Setting > Press the "Delete All Users" button.
2. Deletes all users' registered information.



**Caution**

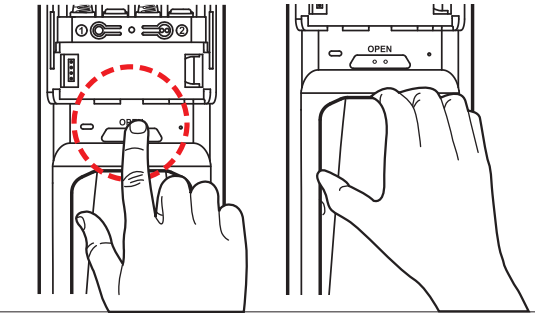
1. When all users' information are deleted, the administrator's authority is also deleted.
2. After deleting all users' information, the administrator's authority must be re-set.

#### 5-3) Delete All Log



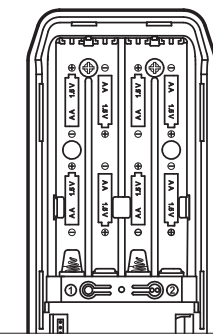
1. Setting > Press "Delete All Log" button.
2. Deletes all access log history of the device.

#### 10) How to open door (Interior)



1. Press Open/Close button or push the inside handle outwards to open the door.

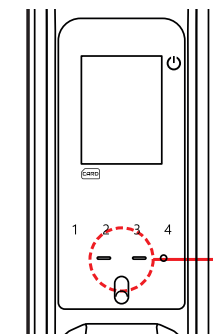
#### 11) Battery Replacement



1.5V "AA" 8 pcs are used.

1. Maximum usable battery times: Over 4000 times (Alkaline Battery Standard)
2. Notification of battery replacement: When the alarm sounds (a melody), immediately open the interior battery cover to replace all batteries at once by appropriately fitting the 1.5V "AA" batteries in right +/- terminal, and do not mix use the new batteries and used batteries.

#### 12) Emergency Power Supply



Emergency Power Supply Terminal

1. When the batteries are fully discharged, contact the 9V square battery to the emergency supply terminal and open the door with the password/card key.
- ※ This method is used when the door-lock has no power and after going inside with the emergency power supply, replace all 8pcs of 1.5V AA' battery at once.